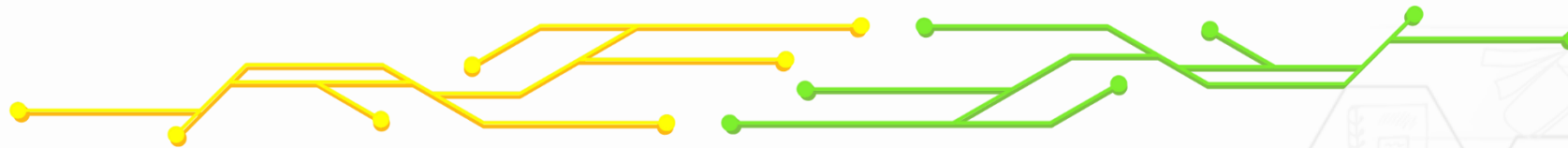


Becoming a future-ready learner

LEARNING WITH TECHNOLOGY



A vibrant school with a culture of care and the spirit of excellence

P6 Parent Engagement Session



Recall PES 2024

“Every student needs to be a **creator**, a **connector** and a **contributor**
going forward”

~ Minister Chan Chun Sing, Minister of Education

Creator

“Create new value for
themselves, for our country
and for the global system”

Connector

“Collaborate with other people,
not just domestically, but with
our overseas partners”

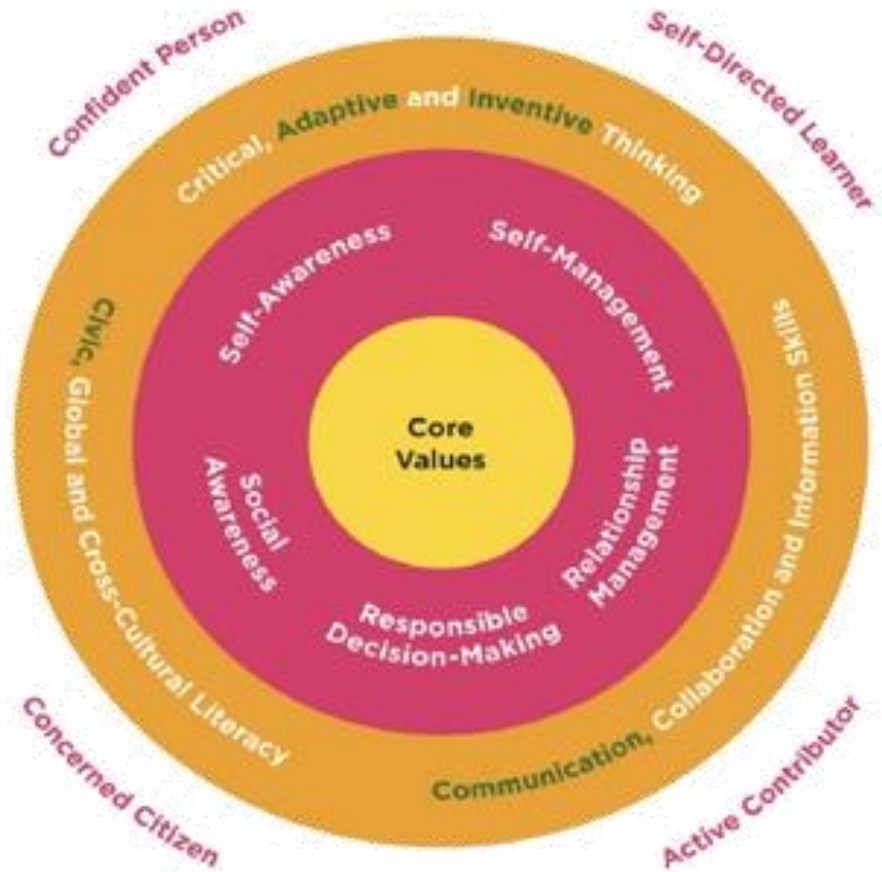
Contributor

“Appreciate the diversity of
strengths... everyone can
contribute something”

Every student a Creator, Connector, Contributor

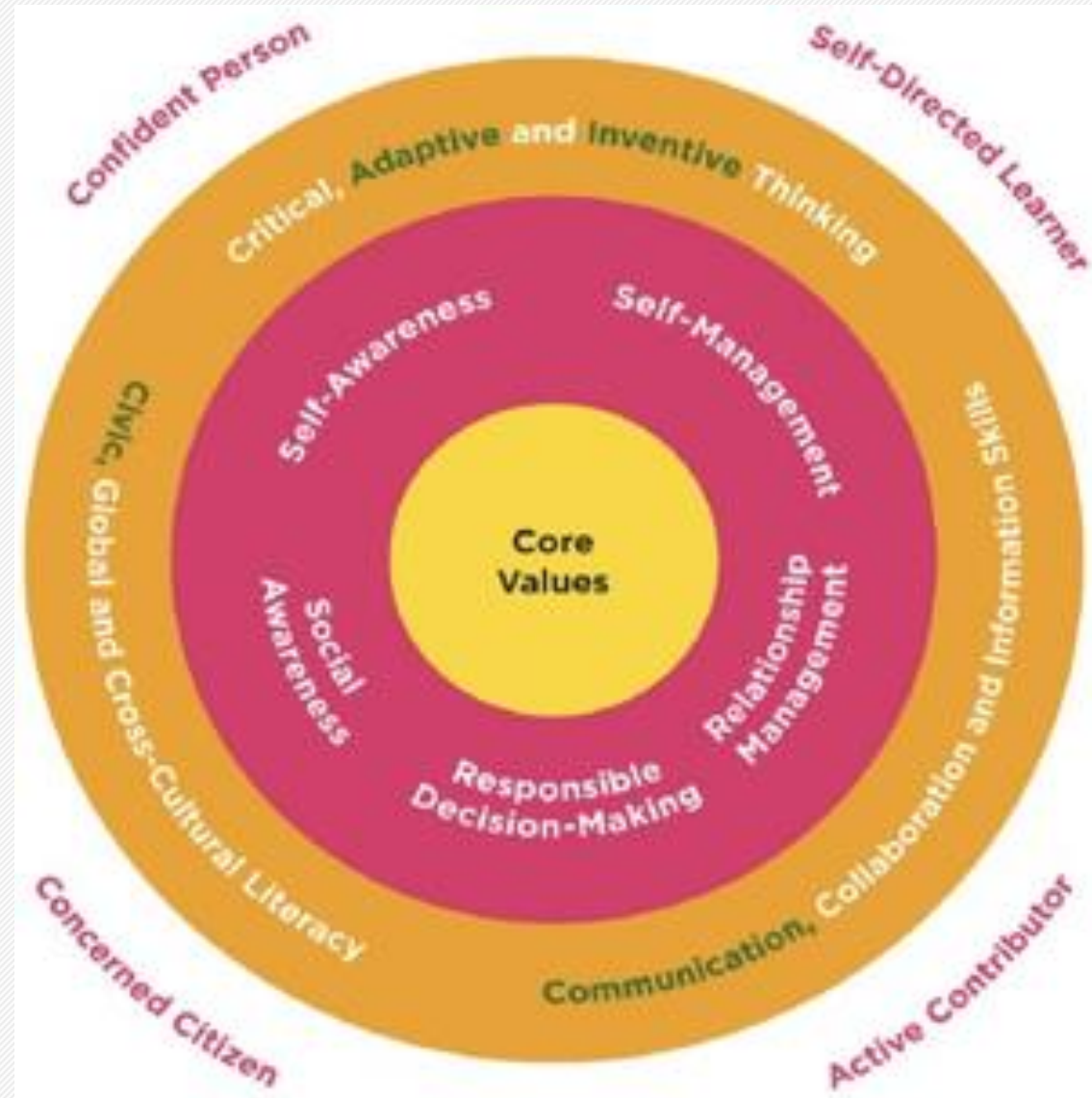
Our Aim

- Students will **create** new value for an uncertain tomorrow
- **Connect** diverse people, bridge differences and seize opportunities
- **Contribute** to society, no matter their background





What are the E21CC schools will focus on?



Within the E21CC priority areas, our students need to develop...

Adaptive Thinking

- i. **confident** in situations in which they do not have **resilient** in
- ii. able to r **nimbly**

Inventive Thinking

- i. **curious** and **reflective** about what they sense of
- ii. **approaching**

To better enable students to be creators

Civic Literacy

- i. **willing to act with shared commitment**
- ii. **So they can appreciate our history and contribute to society**

Communication

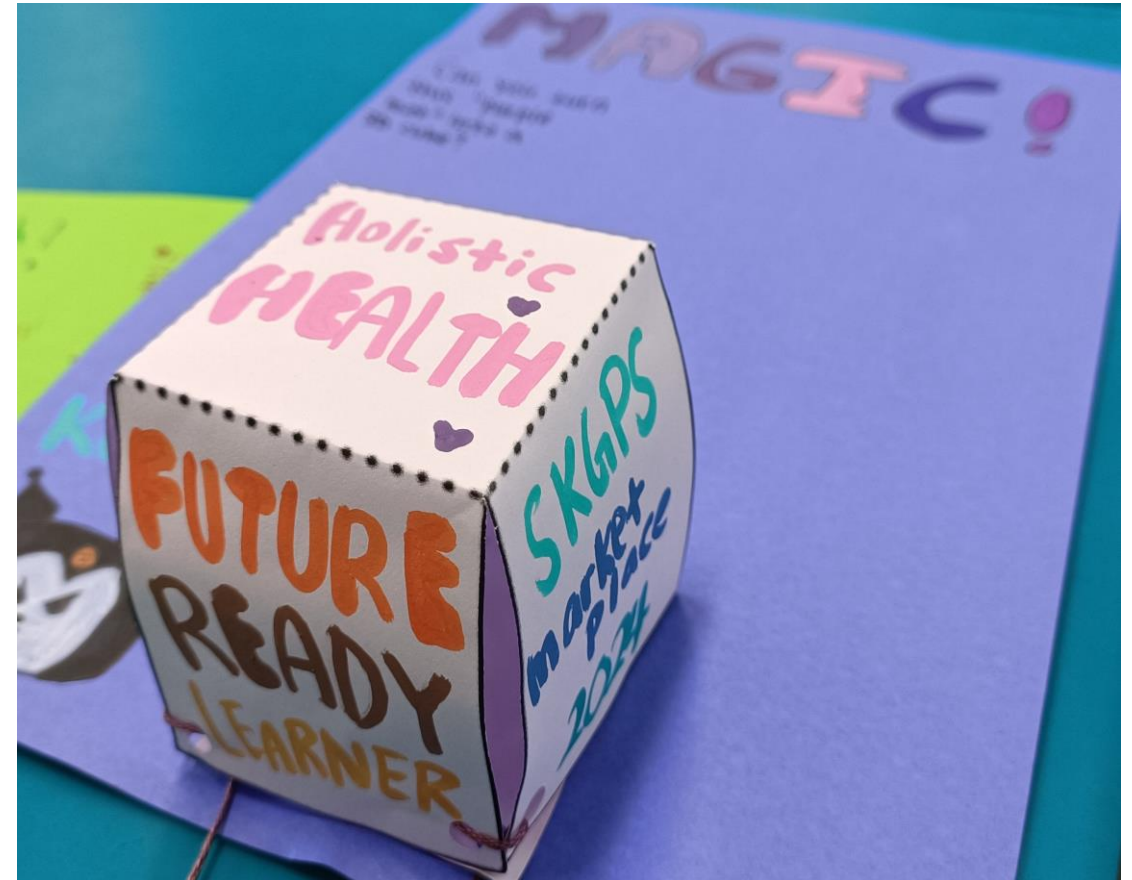
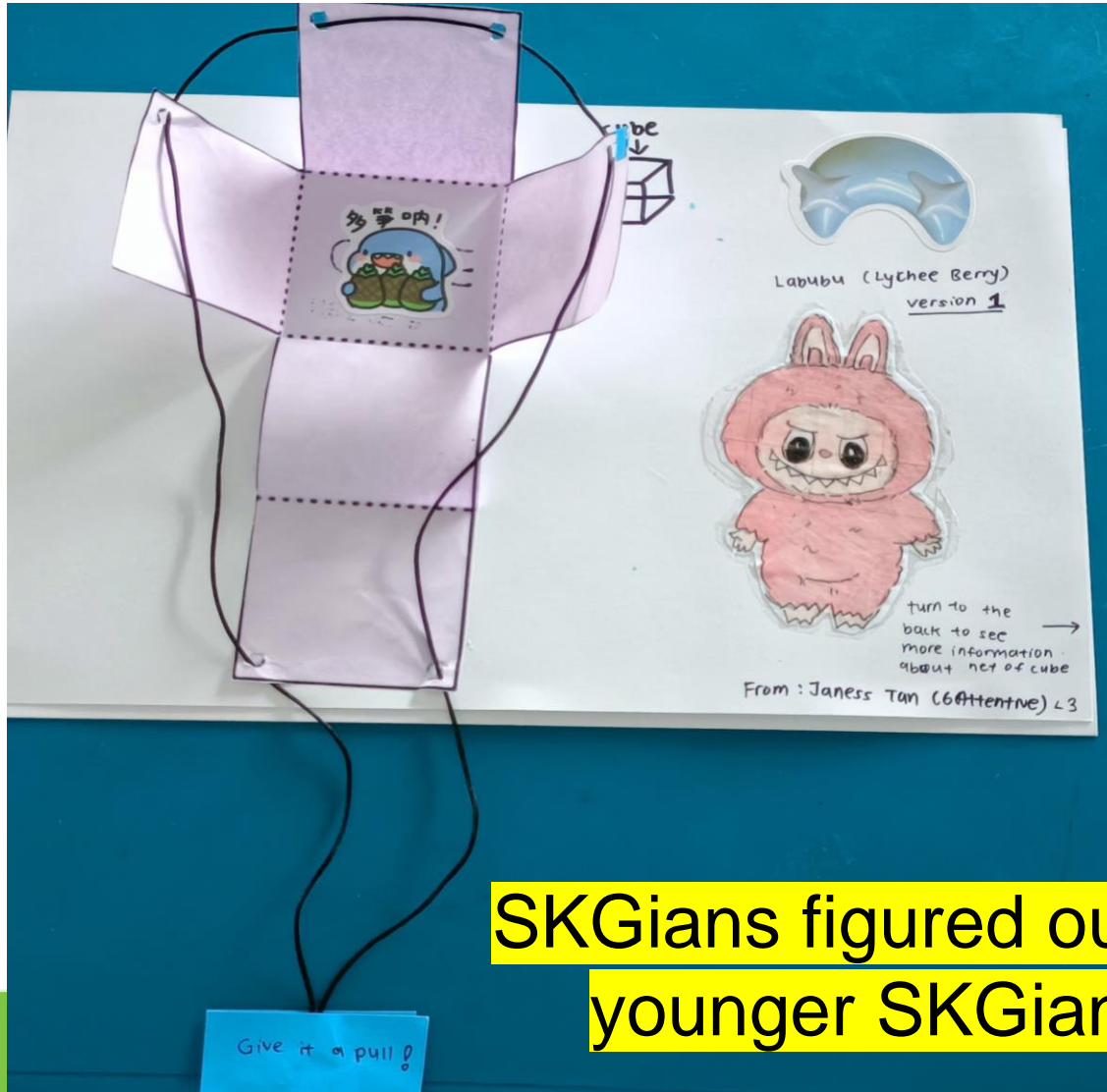
- i. **So they can build bridges between those from different walks of life**
- ii. **So they can build bridges between those from different walks of life**



SENGKANG GREEN
Primary School

Integrating E21CC into the Curriculum

Adaptive and Inventive Thinking



SKGians figured out ways to make Math Toys to enthuse younger SKGians to experience the joy of learning.

A vibrant school with a culture of care and the spirit of excellence



SENGKANG GREEN
Primary School

Integrating E21CC into the Curriculum

Adaptive and Inventive Thinking



SKGians explore possibilities, solving challenges and ignite their curiosity through hands-on discovery

A vibrant school with a culture of care and the spirit of excellence



SENGKANG GREEN
Primary School

Integrating E21CC into the Curriculum

Communication, Collaboration and Information Skills



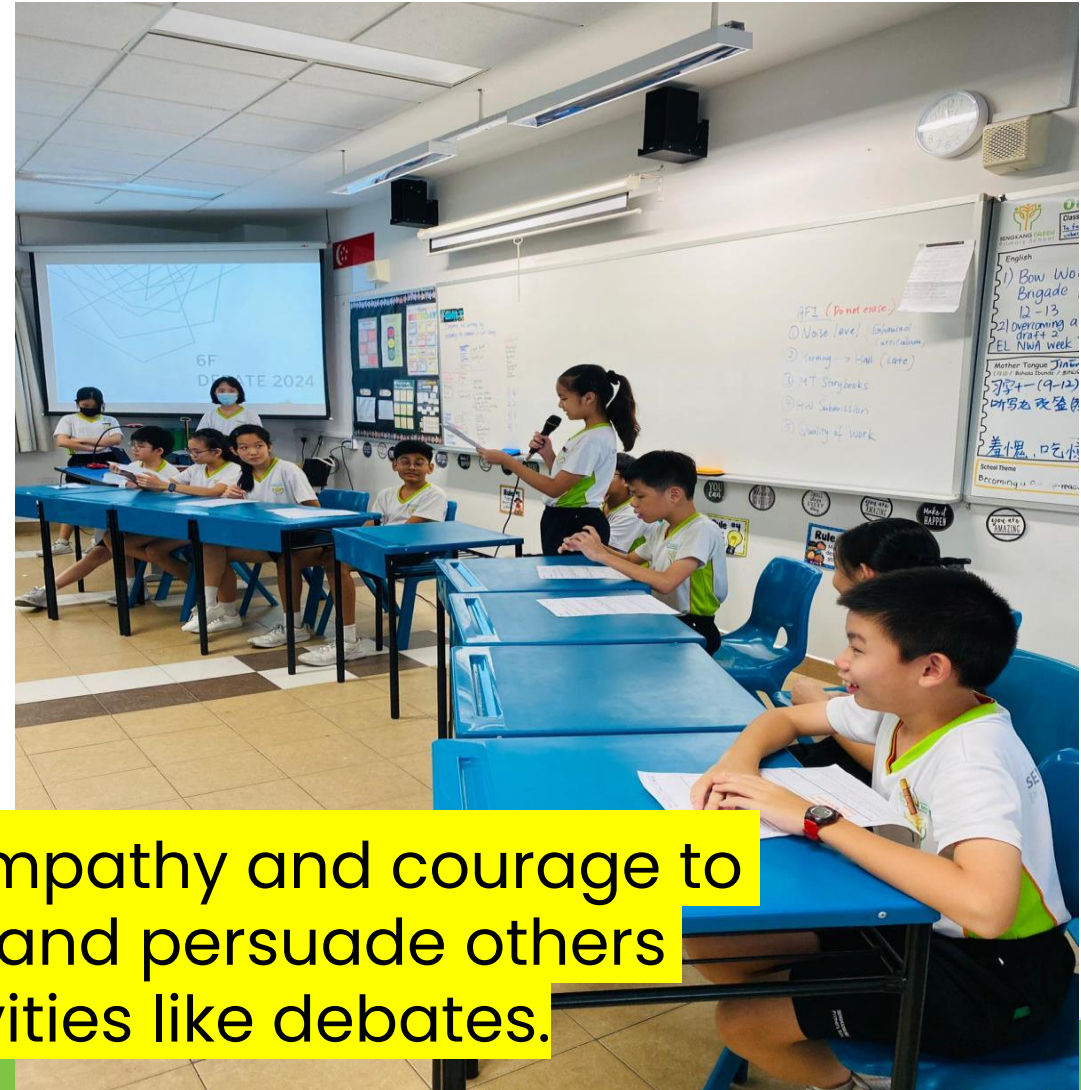
SKGians worked with their peers to explore measurement concepts such circles and area of triangles.



SENGKANG GREEN
Primary School

Integrating E21CC into the Curriculum

Communication and Collaboration Skills



SKGians develop empathy and courage to voice new ideas and persuade others through activities like debates.

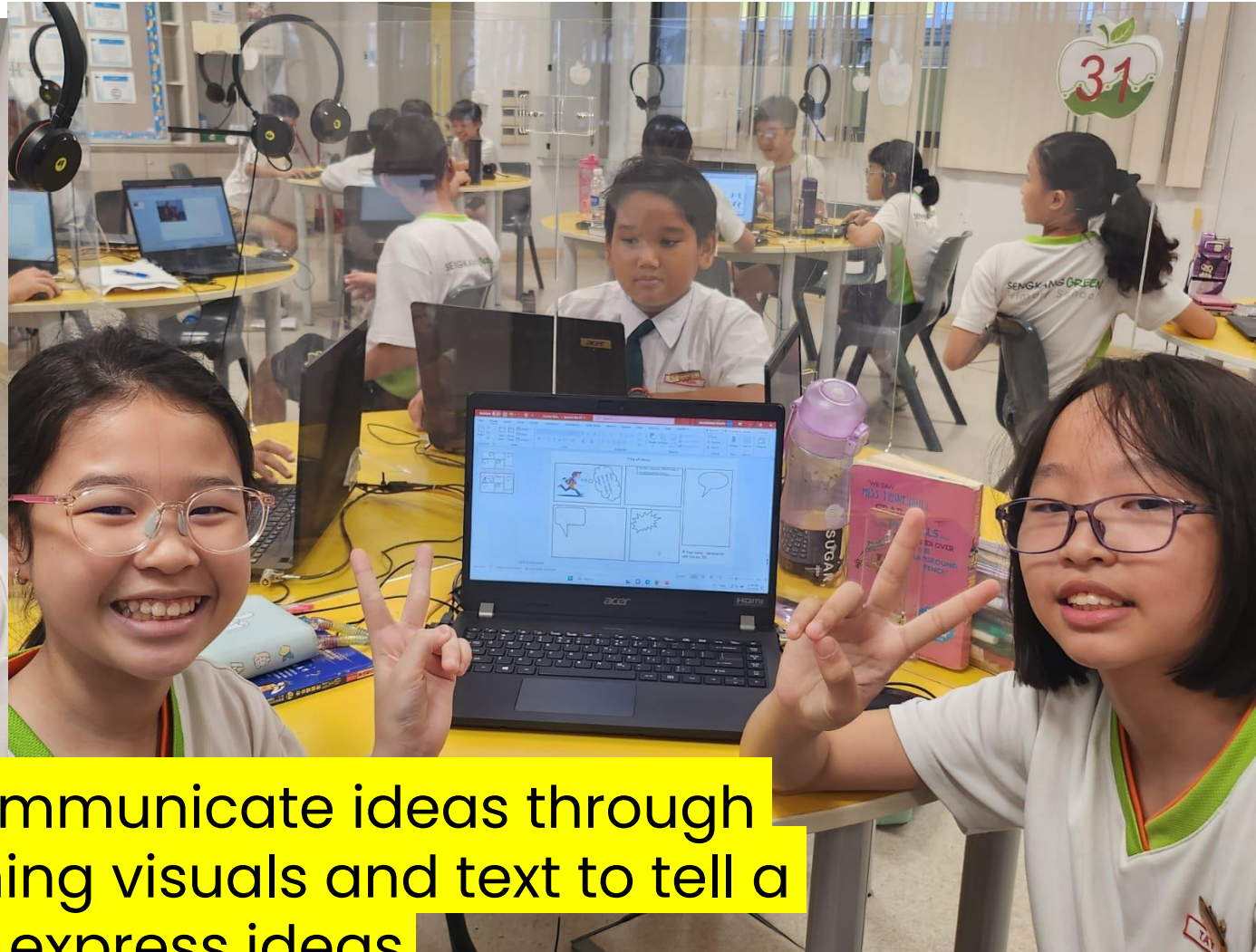
A vibrant school with a culture of care and the spirit of excellence



SENGKANG GREEN
Primary School

Integrating E21CC into the Curriculum

Communication, Collaboration and Information Skills



SKGians learn to communicate ideas through comic strips, combining visuals and text to tell a story or express ideas.

A vibrant school with a culture of care and the spirit of excellence



SENGKANG GREEN
Primary School

Integrating E21CC into the Curriculum

Civic, Global & Cross-Cultural Skills



SKGians access information from reliable sources and talk about social and global issues.

Integrating E21CC into the curriculum

Civic, Global & Cross-Cultural Skills



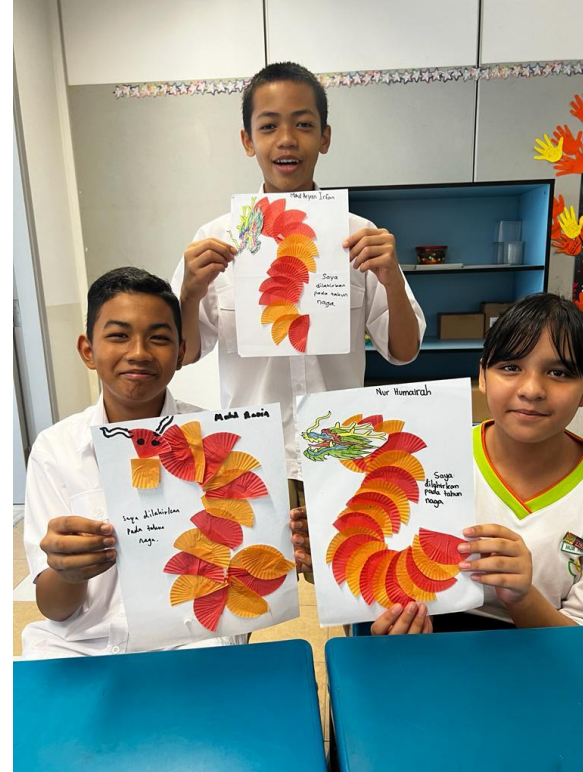
SKGians Learning Journey to Little Indian Heritage Centre



SENGKANG GREEN
Primary School

Integrating E21CC into the Curriculum

Civic, Global & Cross-Cultural Skills



SKGians engaging in cross cultural activities to know about other cultures.

A vibrant school with a culture of care and the spirit of excellence



SENGKANG GR
Primary Sch

Assessment : Moving Beyond Traditional Testing

“We should use *assessment* mindfully to *help our students discover their strengths and interests*, and to identify the most appropriate setting for their next lap of education.”

**Welcome Address by Minister for Education Mr Chan Chun Sing at the
International Summit on the Teaching Profession (ISTP)**

22 Apr 2024

Assessment : Moving Beyond Traditional Testing

Hybrid Mode of Assessment:

Language Subjects

1st part of assessment conducted via SLS

2nd part conducted face to face

Online Formative Assessment:

Adaptive Learning System (ALS)

Lang FA – EL (SLS)

SLS Assignment

Daily Classroom Assessment:

Teachers – Student Interactions

Teachers' Questioning & Observations

Classroom participation & responses



How parents can support 21CC development at home

How to foster Adaptive Thinking?

Examples:

Promote flexibility: Encourage your child to try different approaches to tasks.

Share experiences: Discuss times when you had to adapt and what you learned.

How to foster Inventive Thinking?

Examples:

Support creativity: Provide materials for arts and crafts or building projects.

Celebrate failures: Teach your child that mistakes are part of the learning process.



How parents can support 21CC development at home

How to foster Communication Skills?

Examples:

Encourage discussions: Have regular family discussions about various topics.

Role-play scenarios: Practice conversations in different contexts.

How to foster Civic Literacy?

Examples:

Get involved in community service: Participate together in local projects.

Discuss civic responsibilities: Build awareness of their surroundings, understand about various cultures and practices of different races and nationalities and identities and responsibilities as citizens.



How you can support your child's learning

- ✓ Start Early
- ✓ Regular revision
- ✓ Discuss with your child and draw up with a study plan
- ✓ Set goals with your child
- ✓ Identify and support your child's need
- ✓ Listen to build the relationship

How you can support your child's learning



Notice Thinking

(even when the answer is incorrect.)

E.g., I like how you have used what you already know about a trapezium to solve the first part of the question.

Focus on the Learning Over the Work

Learning is the goal of an assignment.

Take a moment to ask your child the purpose of the homework or revision exercise.

E.g., What do you think is *the purpose* of this writing assignment? Do you know what you need to improve on? How do you intend to do so?



SENGKANG GREEN
Primary School

How you can support your child's learning



What makes you say that?

E.g., What makes you say that the water will evaporate?

What did you notice that makes you say that?

Challenge but Don't Rescue

Teach your child to persevere and embrace struggle and learn to handle unfamiliarity.

Ask questions that will help him/her to develop agency such as:

Can you read the question once more?

What model can you draw?

Can you check the examples in the textbook?



More resources from [Project Zero](#).

Are you a **P.S.L.E** Parent?



Wondering how you can support your child in preparing for the PSLE and for the next steps ahead? Here are some tips on how you can help your child cope well, and explore secondary school choices together.



Ministry of Education
SINGAPORE

© Communications & Engagement Group, Ministry of Education



SENGKANG GREEN
Primary School

**Be a P.S.L.E parent – Proactive,
Supportive, Loving and Empowering!**



Ministry of Education
SINGAPORE



A vibrant school with a culture of care and the spirit of excellence

THANK YOU

